



From: Commander, NYS Military Emergency Boat Service

Subj: OPSUM 10 APR 2026 MEBS PROGRAM

The link to the MEBS LOG APP is <https://www.jotform.com/app/222037196822152>

The following is the status of the New York State Military Emergency Boat Service

1) ADMINISTRATION:

a. With the installation of the Samsara Telematics system over the winter, all MEBS are reminded of the importance of using their personal Telematics card prior to the start of each trip in a MEBS truck. In addition, truck logs are only good for one month. Copies of the completed truck logs are submitted to MEBS HQ after the first of each month for the previous month's activities.

b. Maj Frank Cinturati has been selected as the Prospective Commander of MEBS.

c. We are experiencing ongoing issues with Jotform submissions being sent via email to army.mil accounts. The problem is sporadic since most of the submissions are received. The problem has occurred with the MEBS Proficiency Training Orders Request function, as well as the R1-Receiving Report function. There does not appear to be a problem with Jotform sending emails to civilian accounts.

d. Upcoming Schedule:

- i. 13APR: SAIL250 Albany Subgroup OGR; Port of Albany
- ii. 15MAY: NYS Canal system opens
- iii. 1-10JUL: SAIL250, New York City
- iv. 3-8JUL: SAIL250, Albany
- v. 20JUL: Operation Commanding Force Phase 1, Alexandria Bay
- vi. 3AUG: Operation Commanding Force Phase 2, Alexandria Bay
- vii. 10-11SEP: Exercise Western Horizon, Oneida Lake

2) INFORMATION: *NYS Canal System Notice to Mariners 10APR26*: "Mariners are reminded that the New York State Canal System is NOT yet open for the season. High water levels on Seneca Lake, Cayuga Lake, Cross Lake, Onondaga Lake, Oneida Lake, Seneca River, Oneida River, and the Oswego River make navigating inadvisable at this time due to safety concerns related to obscured subsurface shorelines and debris, as well as property and environmental damage resultant from the wakes of motorized vessels during high water conditions."

3) OPERATIONS:

a. We have received a heads up from US Customs and Border Patrol in Buffalo of a potential request for MEBS support in western New York during Canadian FIFA matches in June. CBP will need to make a formal request for support. This event is called Operation Knot on My Watch II.

b. Readiness Rating:

| MEBS Readiness Rating | | Minimum Standard | Actual | Rating | Goal |
|-----------------------|----------|------------------|--------|--------|------------------|
| Personnel Census | P-Rating | 60 | 53 | 2 | 120 MEBS Members |
| Personnel Staff | S-Rating | 7 | 7 | 1 | 13 Key Staff |



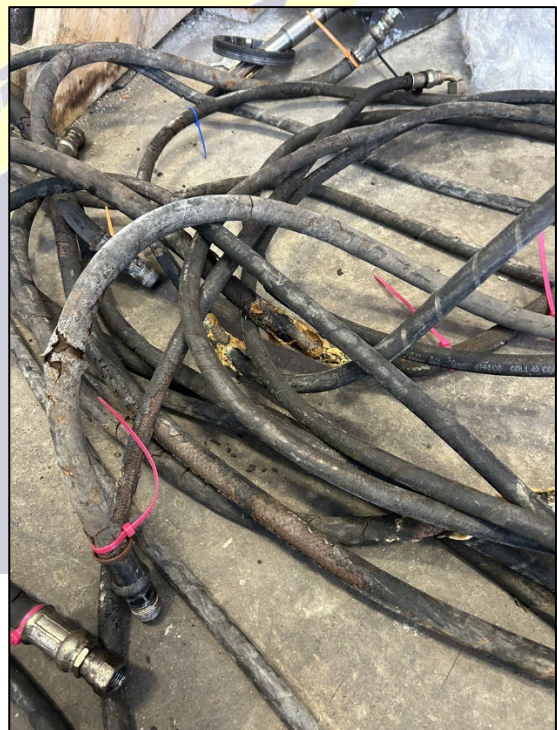
| | | | | | |
|-----------------------------------|-----------|------------------|--------|---|--|
| Training Qualifications | Q-Rating | 27 | 33 | 1 | 45 Qualified Coxswains |
| Training Proficiency | T1-Rating | 92 | 97 | 1 | 240 Proficiency Mandays (2/member/year) |
| Additional Training | T2-Rating | 90% | 66.73% | 3 | Basic Course, Towing Cert., UECO, and + |
| Communications Reliability | K-Rating | 90% | 98.41% | 1 | 100% Functionality |
| Equipment Maintenance | E-Rating | 90% | 86.96% | 2 | 100% Operational |
| Equipment Vehicle Quantity | V-Rating | 7 | 8 | 1 | 11 Trucks |
| Overall Readiness R-RATING | | | 1.50 | 2 | |
| Date: | | 10-Apr-26 | | | |

4) LOGISTICS:

a. The engine work on PB400 continues. The fuel tank has been cleaned, and significant amounts of detritus were removed. During the engine tear-down, cracks in cylinder heads were found between the 1st exhaust and intake valves were found on both the port and starboard engines. The vendor has plans to have the cylinder heads pinned and welded. This growth work will also include replacement of the fuel lines and will require a change notice to the purchase order. The boat cannot reasonably be expected to be functional without this additional work being completed.



(L) Crack in cylinder head.



(R) Original fuel lines from 2004, showing wear and deterioration.



b. PB 300 has been re-powered and is FMC. The new engines have been operationally tested satisfactory. We are awaiting a replacement VesselView display systems for both PB 300 and PB 301 that should be delivered by the third week in April. We will wait until that installation before PB 300 is deployed. The VesselView displays are NMEA 2000-compliant and required to see all available system status gauges.

c. PB440 is currently FMC after completing its annual spring haul out maintenance. However, a leak on the port side engine exhaust (waterside) has been found. While this leak does not pose a threat, it does cause water to leak into the bilges. The boat will be brought in for service on 16APR26 to begin repairs.

d. SFY 2026-27 NPS Expenditures to date:

| Cost Area | Cost | Budget | Remaining | |
|----------------------|---------------------|---------------------|--------------|-------------------------|
| General | \$50.00 | \$13,500.00 | \$13,450.00 | 0.37% |
| Boat Maintenance | \$4,896.56 | \$230,000.00 | \$225,103.44 | 2.13% |
| Truck Maintenance | \$135.00 | \$7,500.00 | \$7,365.00 | 1.80% |
| Trailer Maintenance | \$54.00 | \$6,000.00 | \$5,946.00 | 0.90% |
| Travel/Per Diem | \$441.00 | \$20,000.00 | \$19,559.00 | 2.21% |
| Boat Gasoline | \$0.00 | \$12,500.00 | \$12,500.00 | 0.00% |
| Truck Diesel | \$56.81 | \$10,800.00 | \$10,743.19 | 0.53% |
| Major Acquisition | \$0.00 | \$0.00 | \$0.00 | #DIV/0! |
| Grants Reimbursement | -\$19,251.31 | \$0.00 | \$19,251.31 | #DIV/0! |
| Total | -\$13,617.94 | \$300,300.00 | | % Year Gone: 9.44% |
| Available: | \$313,617.94 | | | % SFY Remaining: 90.56% |

e. Boat, Truck and Trailer Status / Locations:

| Bow / Bumper # | Boat / Vehicle | Location | Status | Mission | Comments |
|----------------|----------------|------------------|--------|-------------|---------------------|
| PB 220 | Patrol Boat | Leeds | FMC | | Ready, on trailer |
| PB 221 | Patrol Boat | Leeds | FMC | | Ready, on trailer |
| PB 230 | Patrol Boat | Leeds | FMC | | Ready, on trailer |
| PB 280 | Patrol Boat | Leeds | FMC | | Ready, on trailer |
| PB 281 | Patrol Boat | Leeds | FMC | | Ready, on trailer |
| PB 300 | Patrol Boat | Leeds | FMC | | Ready, on trailer |
| PB 301 | Patrol Boat | Verplanck | FMC | JTFES DET 1 | Ready, in water. |
| LC 350 | Landing Craft | Glenwood Landing | FMC | JTFES DET 3 | Ready, in water. |
| LC 351 | Landing Craft | Leeds | FMC | | Ready, on trailer |
| PB 400 | Patrol Boat | New Hamburg | NMC | | Engine Re-seal job. |
| PB 440 | Patrol Boat | Staten Island | FMC | JTFES DET 2 | Ready, in water. |
| F350-5274 | Prime Mover | Leeds | FMC | | Ready |
| F350-5327 | Prime Mover | Leeds | FMC | | Ready |



| | | | | | |
|-----------|---------------|---------------|-----|---------------|-------|
| F350-5329 | Prime Mover | Leeds | FMC | | Ready |
| F350-5339 | Prime Mover | Leeds | FMC | | Ready |
| F350-5340 | Prime Mover | Leeds | FMC | | Ready |
| F350-5619 | Prime Mover | Leeds | FMC | | Ready |
| F550-5008 | Prime Mover | Leeds | FMC | Service Truck | Ready |
| F550-5009 | Prime Mover | Jones Beach | FMC | Service Truck | Ready |
| CT 8901 | Cargo Trailer | Staten Island | FMC | | Ready |
| CT 8903 | Cargo Trailer | Leeds | FMC | | Ready |

5) PLANNING AND EXERCISES. We are aware of the following events that we will coordinate personnel support for:

- a. Operation Knot on My Watch II. (June dates will be passed SEPCOR).
- b. SAIL250 Albany (3-8JUL26). We expect more information on MEBS requirements after the On Ground Recon, taking place at the Port of Albany on 13APR26.
- c. Operation Commanding Force Phase 1 (18-20JUL26) and Phase 2 (1-3AUG26) at Alexandria Bay.
- d. Exercise Western Horizon is being planned for 10-11 September on Oneida Lake.

6) COMMUNICATIONS. N/A

7) TRAINING. N/A