



From: Commander, NYS Military Emergency Boat Service

Subj: OPSUM 13 DEC 2024 MEBS PROGRAM

The link to the MEBS LOG APP is <https://www.jotform.com/app/build/222037196822152>

The following is the status of the New York State Military Emergency Boat Service

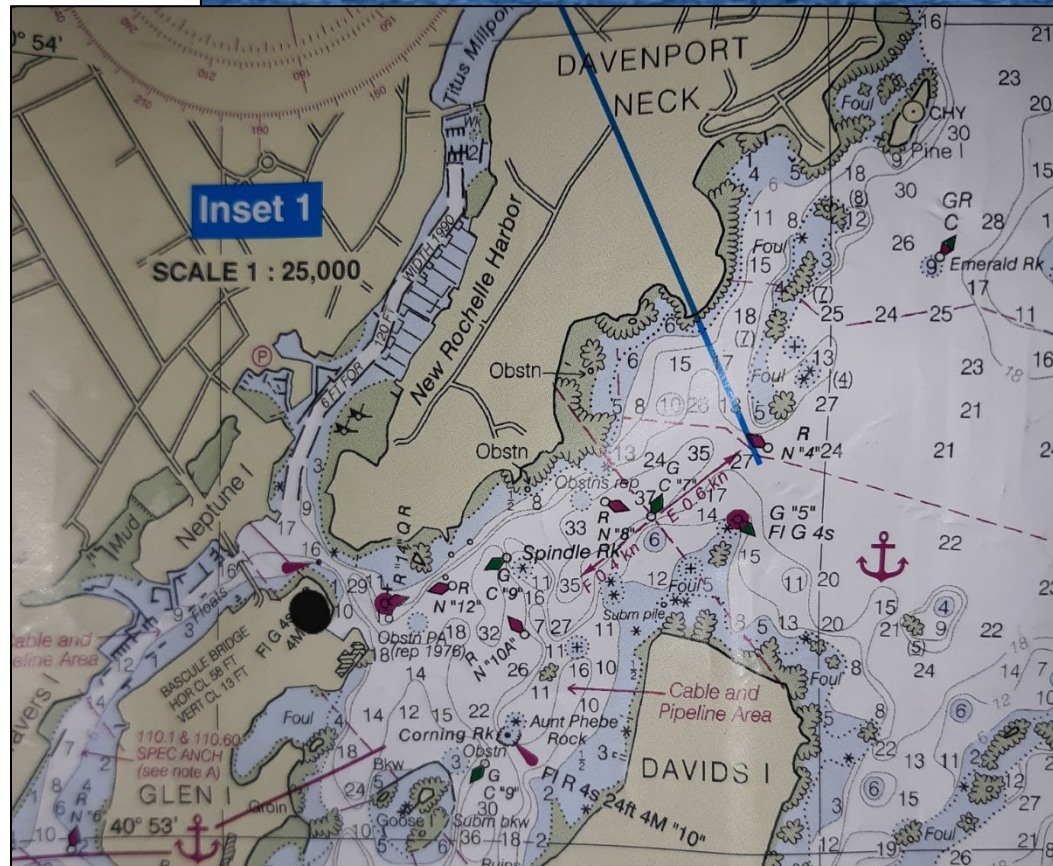
+++++

KAUL'S KWIZ

(A test of your nautical knowledge brought to you by BMC Bill Kaul, OIC of the "Black Jacks". See answer at the end of OPSUM)

Q1. Proceeding Seaward (ENE) you are confronted with the pictured set of buoys. The black dot on the chart represents your current position.

How will you proceed?





+++++

1) ADMINISTRATION:

a. Updates to the New York Naval Militia Leadership Organization.

- i. NYNM Commander: RDML Michael Perry
- ii. NYNM Dep CDR and Chief of Staff (CoS): CAPT MaryEtta Nolan
- iii. New NYNM ACoS N3/Operations: CAPT Jay Dutcher
- iv. New NYNM ACoS N7/Training: LCDR Filipp Khosh
- v. New NYNM JAG: CDR Sergio Villaverde
- vi. New Force SEL: MGySgt Sal Rignola has replaced MNCM Glenn Niemitalo as Force Senior Enlisted Leader
- vii. New SOUTHCOM CDR: CDR John Curran has replaced CAPT Pete Marghella as Commander, SOUTHCOM
- viii. New SOUTHCOM SEL: BMCM Wayne Hosmer has replaced MGySgt Rignola as SOUTHCOM Senior Enlisted Leader
- ix. New NORTHCOM CDR: CDR Steve Neuhaus has replaced CAPT MaryEtta Nolan as Commander, NORTHCOM

b. For all MEBS members assigned to the Asylum Seeker Resource Support mission (ASRS), we expect all personnel to REFRAD by 31MAR25 at the latest. This will mean that all MEBS members currently exempt from MEBS proficiency requirements are expected to be complying during the 2025 boating season.

c. We are projecting that we will request a FY2025 Port Security Grant to support and offset the maintenance costs associated with five boats (other than PB440) routinely assigned to JTF Empire Shield duty. The amount of the grant request will be \$68,625.00 federal and \$22,875 state for the period 1SEP25 – 31AUG28.

d. Persons who have not been active in MEBS are being removed from the roster and placed "inactive." Eight members have been recently moved to that category and will no longer reflect against our readiness.

e. Upcoming Events:

- i. N6 Training, 7-9 FEB25; Leeds
- ii. Exercise Empire Challenge '25, 4-6JUN 25, Niagara County
- iii. Operation Commanding Force '25, TBD July 2025, Alexandria Bay

2) INFORMATION: The Commander, NYNM has directed that FEMA IS 200, 700, and 800 courses are no longer mandated for 900-series E7 and above. However, IS 100 is now required for all to join the NY Naval Militia and IS 200 is required for 900-series promotion eligibility.

3) OPERATIONS:

a. Readiness Rating:

MEBS Readiness Rating		Minimum Standard	Actual	Rating	Goal
Personnel Census	P-Rating	60	56	2	120 MEBS Members
Personnel Staff	S-Rating	7	12	1	13 Key Staff





Training Qualifications	Q-Rating	27	36	1	45 Qualified Coxswains
Training Proficiency	T1-Rating	90	91	1	240 Proficiency Mandays (2/member/year)
Additional Training	T2-Rating	90%	114.35%	1	Basic Course, Towing Cert., UECO, and +
Communications Reliability	K-Rating	90%	98.55%	1	100% Functionality
Equipment Maintenance	E-Rating	90%	100.00%	1	100% Operational
Equipment Vehicle Quantity	V-Rating	11	9	2	11 Trucks
Overall Readiness R-RATING			1.25	2	
Date:		13-Dec-24			

4) LOGISTICS:

a. N4 Summary for boats assigned to JTFES:

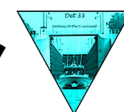
Boat	Engine	HP	Acquisition	Hours on 12/1/2024	Hours Last Month	Hours of Service 2024	Last Preventive Maint	Date Performed	Hours @ Last Maint	Next Maintenance Due	Hours Until Maint Due	Maintenance Type Scheduled
PB300	Port	250	25-Mar-14	2393.00	60	158.00	100 Hours Service	10/14/24	2372.00	2472	79	200 Hour Service
PB300	Starboard	250	25-Mar-14	2418.00	113	205.00	100 Hours Service	10/14/24	2398.00	2498	80	200 Hour Service
PB301	Port	250	25-Mar-14	2191.00	0.00	105.00	300 Hours Service	9-27-24	2191.00	2291	100	100 Hour Service
PB301	Starboard	250	25-Mar-14	2186.00	0.00	111.00	300 Hours Service	9-27-24	2186.00	2286	100	100 Hour Service
LC350	Port	300	28-May-24	289.00	55	289.00	300 Hours Service	12-06-24	289.00	389	100	100 Hours Service
LC350	Starboard	300	28-May-24	289.00	55	289.00	300 Hours Service	12-06-24	289.00	389	100	100 Hours Service
LC351	Port	250	22-Mar-22	742.00	22	311.00	300 Hours Service	7/29/24	705.00	805	155	200 Hour Service
LC351	Starboard	250	22-Mar-22	742.00	22	309.00	300 Hours Service	7/29/24	705.00	805	155	200 Hour Service
PB400	Port	430	27-May-16	2905.00	27	266.00	1000 Hours Service	09-06-24	2804.00	3054	183	250 Hour Service
PB400	Starboard	430	27-May-16	2907.00	28	268.00	1000 Hours Service	09-06-24	2807.00	3057	184	250 Hour Service
PB440	Port	600	09-Oct-20	2432.00	76	548.00	250 Hours Service	10/31/24	2391.00	2641	209	250 Hour Service
PB440	Starboard	600	09-Oct-20	2426.00	101	559.00	250 Hours Service	10/31/24	2381.00	2631	205	250 Hour Service
							Total Hours 2023:	2531				
							Total Hours 2024:	3827.00				
							JTFES 2024 Hours:	3418.00				
							MEBS Hours:	409				

NYNM MEBS support of JTFES included a total of **3418 motor hours this year**. MEBS training and support of other events was a total of **409 hours**. This is an increase in motor hours over the 2023 totals.

Regarding the upcoming schedule of maintenance for the JTFES MEBS boats. It is included on the schedule; our goal is to complete 300-hour maintenance intervals at the depot level in Leeds by N4 personnel. The 250-hour maintenance for PB400 at Viking Boat Yard with both JTFES assigned Tech and N4 shop. The 100/200-hour Mercury maintenance for the other assets location as determined by MKC Stefandel using Techs assigned to the DETS. PB440 at Atlantic Services as needed.

LC350 is ready to go back on mission, PB300 is pre-positioned to be used to augment other assets for maintenance periods and PB301 is FMC at Leeds on trailer to deploy if necessary to maintain coverage.

LC351 needs to be recovered to Leeds so we can begin the repower project. We are removing the OPTI's from PB281 next week in anticipation of moving the V8 Four stroke motors from LC351 and installing on PB281. The NEW SeaPro's for LC351 are slated to arrive around the 2nd week of January.





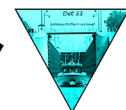
In addition to the repowering project, N4 has extensive "Punch List" work on all boats (Lots of 300-hour maintenance intervals are do on our aging fleet of boats) as well as other misc repairs to antenna's, doors, installed equipment, trailer bunks, straps, and rollers. We are also expecting to participate in the COMMS N6 visit in February and associated updating/refit on that trailer.

b. SFY 2024-25 NPS Expenditures to date:

Cost Area	Cost	Budget	Remaining	
General	\$16,520.55	\$10,000.00	-\$6,520.55	165.21%
Boat Maintenance	\$94,978.30	\$95,000.00	\$21.70	99.98%
Truck Maintenance	\$1,769.46	\$3,000.00	\$1,230.54	58.98%
Trailer Maintenance	\$529.03	\$1,500.00	\$970.97	35.27%
Travel/Per Diem	\$14,681.29	\$20,000.00	\$5,318.71	73.41%
Boat Gasoline	\$12,215.13	\$18,000.00	\$5,784.87	67.86%
Truck Diesel	\$6,241.56	\$8,000.00	\$1,758.44	78.02%
Major Acquisition	\$43,712.62	\$47,000.00	\$3,287.38	93.01%
Grants Reimbursement	-\$20,492.54	-\$70,000.00	-\$49,507.46	29.28%
Total	\$170,155.40	\$202,500.00		% Year Gone: 76.94%
Available:	\$32,344.60			% SFY Remaining: 23.06%
				% Money Obligated: 84.03%

c. Boat, Truck and Trailer Status / Locations:

Bow / Bumper #	Boat / Vehicle	Location	Status	Mission	Comments
PB 220	Patrol Boat	Leeds	FMC		Ready. On trailer
PB 221	Patrol Boat	Leeds	FMC		Ready. On trailer
PB 230	Patrol Boat	Leeds	FMC		Ready. On trailer
PB 280	Patrol Boat	Leeds	FMC		Ready. On trailer
PB 281	Patrol Boat	Leeds	FMC		Ready. On trailer
PB 300	Patrol Boat	Jones Beach	FMC	Training	Ready, in water.
PB 301	Patrol Boat	Leeds	FMC		Ready. On trailer
LC 350	Landing Craft	Leeds	FMC		Ready, in water.
LC 351	Landing Craft	Glenwood Landing	FMC	JTFES DET 4	Ready. On trailer
PB 400	Patrol Boat	Verplanck	FMC	JTFES DET 1	Ready, in water.
PB 440	Patrol Boat	Staten Island	FMC	JTFES DET 2	Ready, in water.
F350-5274	Prime Mover	Camp Smith	FMC		Ready
F350-5275	Prime Mover	Leeds	FMC		Ready
F350-5327	Prime Mover	Leeds	FMC		Ready
F350-5329	Prime Mover	Leeds	FMC		Ready





F350-5339	Prime Mover	Leeds	FMC		Ready
F350-5340	Prime Mover	Leeds	FMC		Ready
F350-5619	Prime Mover	Leeds	FMC		Ready
F550-5008	Prime Mover	Camp Smith	FMC	Service Truck	Ready
F550-5009	Prime Mover	Jones Beach	FMC	Service Truck	Ready
CT 8901	Cargo Trailer	Staten Island	FMC		Ready
CP 8902	C2 Trailer	Leeds	FMC		Ready
MT 8903	Maint Trailer	Leeds	FMC		Ready

- 5) PLANNING AND EXERCISES. N/A
- 6) COMMUNICATIONS. MEBS N6 Communications Team training at Leeds on 7-9FEB25.
- 7) TRAINING.
 - a. Kaul's Kwiz Answer

See the below chart. The Blue "squiggly" Line signifies your proposed track headed to sea.

